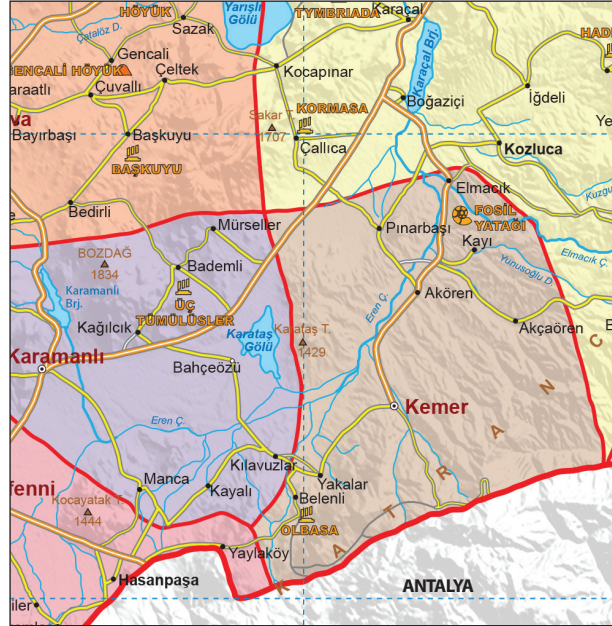


Kemer

Kemer and its surroundings, which date back to ancient times, were under the rule of Lydians, Phrygians and Romans for long time. It came under the rule of Turkish Beys right after the Malazgirt Victory of 1071. The first administrative structures in Kemer were established during the Anatolian Seljuks and Hamitoğulları Periods.



Historic Merkez Yukarı Mosque, exceptional with its wooden hand-drawn decorations.



Agustos 2021/5 bin adet

REPUBLIC OF TURKEY
BURDUR GOVERNORSHIP
Ph: +90 248 233 10 79 • Fax: +90 248 233 86 77
E-mail: burdur@burdur.gov.tr • www.burdur.gov.tr



Burdur Kemer



www.burdur.gov.tr



Akpınar Plateau



Asarcık Plateau Housing



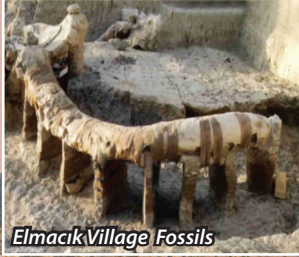
Akpınar Plateau



Asarcık Plateau Housing



Akpınar Plateau



Elmacik Village Fossils

Kemer

Kemer, which was a township from 1286 onwards, is one of the important centers of the region with 7 shops, 1 guild, 1 oil house, 22 mosques, 9 prayer rooms, 21 primary schools, 4 madrasahs, according to the yearbook dated 1887. In 1899 it is stated to have 1,178 households and 4,948 inhabitants in 22 villages. A municipality was established in Kemer in 1956, and it was announced a district with the law enacted in 1987. Its current population is 3,129.

The most important source of livelihood in Kemer District is animal breeding and agriculture. In addition, highland tourism is developing rapidly in recent years. Accommodation and social facilities have been built under the leadership of the Municipality on the Highlands of Asarcık at 1400 m altitude and Akpınar at 1600 m altitude, and more in progress.



District Center



Kemer Kayı Pond

